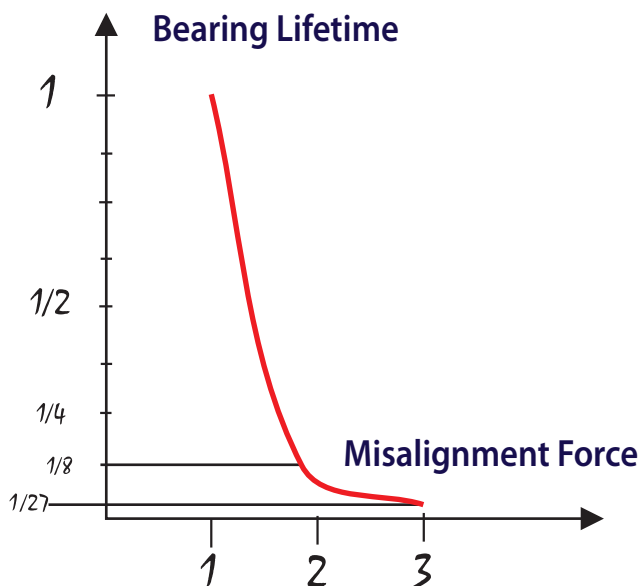


Benefits of Alignment:

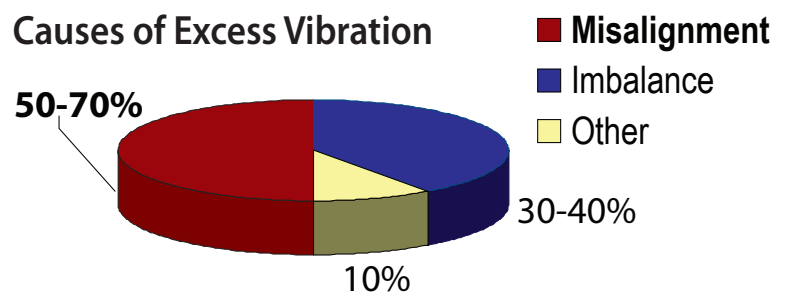
- Alignment is critical to the performance and reliability of all rotating equipment
- Removes destructive forces present on shafts and other rotating parts
- Reduces premature failure of bearings and seals
- Increases operating efficiency and reduces energy consumption
- Increases reliability and uptime
- Lowers overall cost of ownership



The critical relationship between misalignment and bearing failure.



More than 50% of all rotating equipment problems stem from misalignment.





Precision Alignment:

- VIBRALIGN FixturLaser NXA-Pro laser system
- Horizontal & Vertical shaft alignment
- V-belt and sheave alignment
- Professional Alignment Technicians
- Alignment Certification Reports

Service Department:

More than 200 years of combined service experience, serving industry and trade since 1949.

- **Service Centers:** Two locations, well equipped and fully stocked in Rochester and Troy, NY.
- **Capabilities:** Vast array of pump repair and many other technical services.
- **Reliability Services Group:** Pump Performance Improvement. Pump and Seal Reliability. Custom Machining Solutions.
- **Shop Repair:** In-shop repair services for your pumps and other rotating equipment.
- **Precision Alignment:** Precision shaft & v-belt alignment for new and existing equipment.
- **Preventative Maintenance:** Preventative and proactive service agreements to suit your company needs.
- **Sewage Grinder Pumps:** Services for E/One and other sewage grinder pumps & stations.
- **Safety:** We are committed to the safety of our employees and work facilities.



BUFFALO

2829 Wehrle Drive, Suite 12B
Williamsville, NY 14221
P: (716) 565-9403
F: (716) 565-0649

ROCHESTER

175 Akron Street
Rochester, NY 14609
P: (585) 482-9640
F: (585) 482-4149

ALBANY

244 First Street
Troy, NY 12180
P: (518) 272-3431
F: (518) 272-4406

Call 800-333-0598 or visit SiewertEquipment.com