

**Elizabethtown:** 3 Meating Place | Elizabethtown, PA 17022 | Phone: 717-367-8294 | Fax: 717-367-0281 | Toll-Free: 1-800-989-8294

**West Chester:** Engineered Process Solutions (EPS) | Ph: 484-841-6040 | Email: [EPSsales@cummins-wagner.com](mailto:EPSsales@cummins-wagner.com)

### Air Compressors, Vacuum, Dryers & Accessories

<b>Airtech Vacuum</b>	Vacuum and Compressed Air Systems
<b>BEKO</b>	Refrigerant & Desiccant Air Dryer, Filtration and Condensate drains
<b>Cameron/Ingersoll Rand</b>	150 to 1250 HP Centrifugal Compressors Includes: <b>Cooper-Turbo Parts</b>
<b>Champion</b>	1 to 30 HP Reciprocating Compressors Oil-Free & Lubricated
<b>Elmo Rietschle</b>	Blower & Vacuum Pumps
<b>Gardner Denver</b>	5 to 500 HP Reciprocating, Rotary Screw Compressors, Oil-Free & Lubricated
<b>Hitachi</b>	Oil-Free Scroll & Rotary Screw Compressors
<b>Kobelco</b>	Oil-Free Rotary Screw Compressors
<b>Powerex</b>	Oil-Less Reciprocating and Scroll Air Compressors
<b>Standard Xchange</b>	Aftercoolers & Separators
<b>Zeks</b>	Refrigerant & Regenerative Air Dryers, Air Filters & Demand Expanders

### Pumps - Centrifugal & Positive Displacement

<b>Ampco Pumps</b>	Sanitary Centrifugal, Marine Duty
<b>Bell &amp; Gossett</b>	Inline & Base Mounted Centrifugal Pumps
<b>Burks</b>	Self-Priming Centrifugal & Regenerative Turbine Pumps
<b>Colfax (Allweiler &amp; Imo)</b>	Progressing Cavity, Hot Oil, & Screw Pumps
<b>Ebara</b>	Submersibles, Grinders & Sewage Handling Systems, Dewatering/Slurry Pump
<b>Flowserve</b>	<b>DURCO/Ingersoll-Rand/Worthington/SIHI</b> End Suction & Split Case Centrifugal ANSI Process, Sealless Magnetically Driven, Non-Metallic, Vertical Turbine & Gear Pumps
<b>Gorman-Rupp</b>	Self-Priming Centrifugal Pumps
<b>Goulds Water Technology</b>	Centrifugal & Multi-Stage Pumps
<b>Innomag (Flowserve)</b>	Thrust Balanced Mag Drive Centrifugal Pumps
<b>Serfilco</b>	Centrifugal Mag Drive & Sealed Pumps
<b>Vertiflo</b>	Vertical Wet Pit & Self Priming Pumps
<b>Viking</b>	Rotary Gear & Lobe Pumps - Packed, Sealed & Sealless Mag-Drive
<b>Vogelsang</b>	Rotary Lobe Pumps
<b>Warren Rupp (Versamatic)</b>	Air Operated Double Diaphragm Pumps, Tranquilizers & High Pressure Pumps
<b>Wright Flow Technologies</b>	Positive Displacement Sanitary Pumps

### Heat Transfer Equipment & Accessories

<b>Bell &amp; Gossett</b>	Shell & Tube, Plate & Frame Heat Exchangers
<b>Cemline</b>	Industrial Water Heaters, Converters, Steam Generators
<b>Cummins-Wagner EPS</b>	Custom Fluid Handling Packages (heating, cooling, transfer, etc.)
<b>Domestic</b>	Boiler Feed & Condensate Pump Units
<b>Hoffman</b>	Pressure & Temperature Reducing Valves, Steam Traps & Vents
<b>Liebert</b>	Air Cooled Dry Coolers
<b>McDonnell-Miller</b>	Boiler Controls, Flow Switches
<b>Standard Xchange</b>	Shell & Tube, Plate & Frame, Braze-Pak Heat Exchangers
<b>Thermal Transfer Products</b>	Heat Transfer Equipment

### Specialties

<b>Eagle Burgmann</b>	Component, Cartridge & Fully Split Mechanical Seals
<b>Eaton</b>	Simplex, Duplex and Y-Strainers
<b>Lakos</b>	Separators & Filtration Solutions
<b>Nord</b>	Gear Reducers and Gearmotors
<b>WEG</b>	Full line of electric motors
<b>WIKI</b>	Pressure Gauges, Thermometers, Diaphragm Seals



Updated 3/17





"A 100% Employee-Owned Company"

## Service & Repair Capabilities

3 Meating Place | Elizabethtown, PA 17022 | Phone: 717-367-8294 | Fax: 717-367-0281 | Toll-Free: 1-800-989-8294

### Field Service

Fully-equipped Service Trucks  
Factory Trained and Certified Service Personnel  
Safety Certified and Trained  
Disassemble, Inspect and Repair On-site  
Fast Turnaround  
24 hours/day, 7 days/week, 365 days/year

### Turnkey Service

Removal  
Installation & Start-up  
Supervision & Commissioning

### In-House Full Service Repair

5,000 Sq. Ft. Dedicated Repair Facility  
Overhead Bridge Crane with 10,000# Lifting Capacity  
Milling Machine & Lathe  
Drill and Hydraulic Presses with Capacity to 150 Tons  
Stainless Steel Parts Washer  
Paint Booth  
Welding & Plasma Cutting

### Centrifugal Air Compressor Repair

Complete Rebuilds  
Energy Efficiency Upgrades  
Complete Controls, Motor & Starter Upgrades  
Preventative Maintenance Contracts

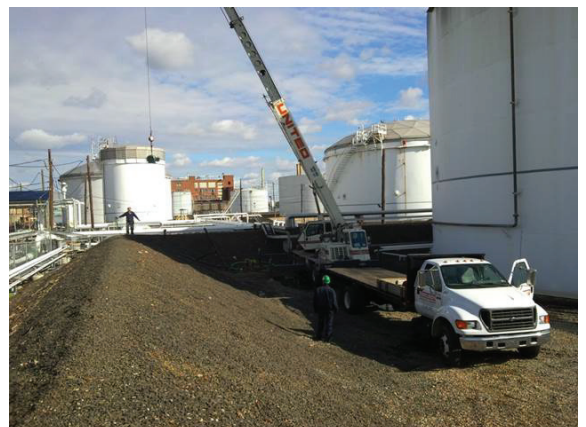
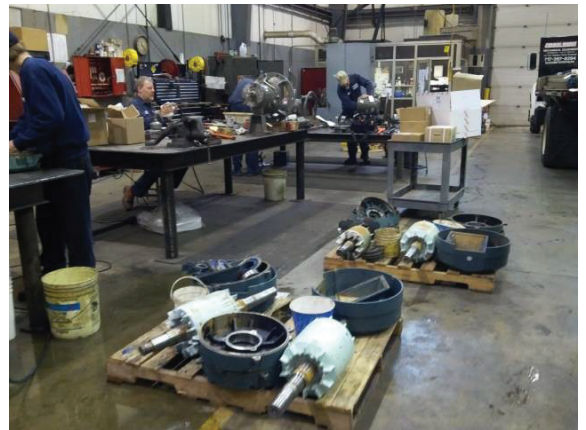
### Rotary Screw & Reciprocating Air Compressor Repair

Complete Rebuilds of All Manufacturers  
Energy Efficiency Upgrades  
Preventative Maintenance Contracts

### Pump & Motor Repair

Field & Shop Repair of Most Major Pump Brands  
Pick-up & Delivery Available  
In-House Machining Capabilities  
Laser Alignment & Vibration Analysis  
Removal & Installation  
Preventative Maintenance Contracts  
Electrical Testing

Updated 3/17



# Call 1-800-989-8294 for Service.