

## Customer Testimonial: GridBee AP500 Air-Powered Mixer

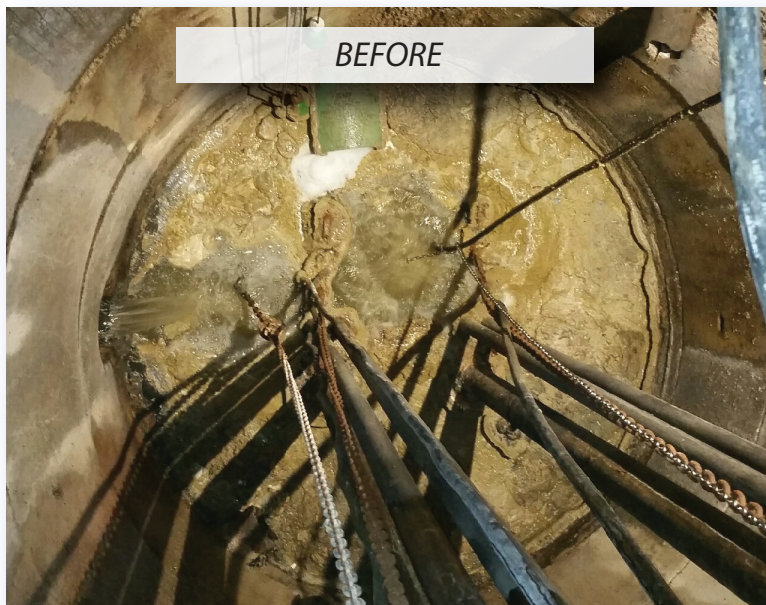


SUNY Cobleskill's pump station consists of two 10 HP submersible pumps and one 5 HP submersible mixer. Discharge from their dining hall and five dormitories creates a very thick layer of FOG (fat, oil, grease), which builds up in the station. The submersible mixer could not break up the grease layer and also required routine maintenance (every week) due

to rags being caught on the blades of the mixer. The submersible mixer was removed and replaced with a 0.5 HP air-powered GridBee AP500 mixer.

*"We installed the GridBee AP500 mixer on a trial basis. Within one week the entire grease layer was gone and the odors were reduced significantly. Not only that, we are saving a bunch of energy and nothing gets caught on the mixer! We're extremely happy with the results we are getting."*

- Bob Blanchard, Plumber & Steamfitter, SUNY Cobleskill



BEFORE



SIX WEEKS AFTER

### Backed by Siewert Service

With Authorized Service Centers in Rochester and Albany, a fleet of service vehicles, highly-skilled service technicians, and in-house parts specialists, Siewert Equipment is ready to provide reliable and effective aftermarket support to your GridBee equipment.

Call 800-333-0598 or visit [SiewertEquipment.com](http://SiewertEquipment.com)

