



## CASE STUDY:

### *2.5 MGD Washington County Sewer District, NY*

The Washington County WWTP serves a population of 15,000 people. The sewer district's existing blended sludge mixer was at the end of its useful life.

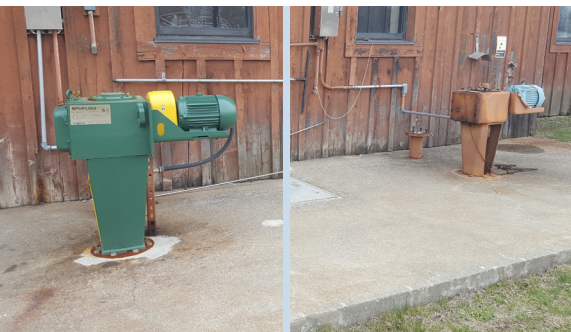
## SOLUTION & RESULTS:

### *Lightnin Retrofit of Competitor Mixer*

Siewert Equipment and Lightnin were able to work together for quick engineering on the retrofit of the existing mixer. The gearbox was designed to be a direct flange to flange retrofit.

The plant workers could complete the easy install, reusing the existing shaft and impeller.

The mixer is installed and running great!



Contact your local Siewert Outside Sales Engineer to discuss the right mixer for your application.

**Call 800-333-0598 or visit [SiewertEquipment.com](http://SiewertEquipment.com)**