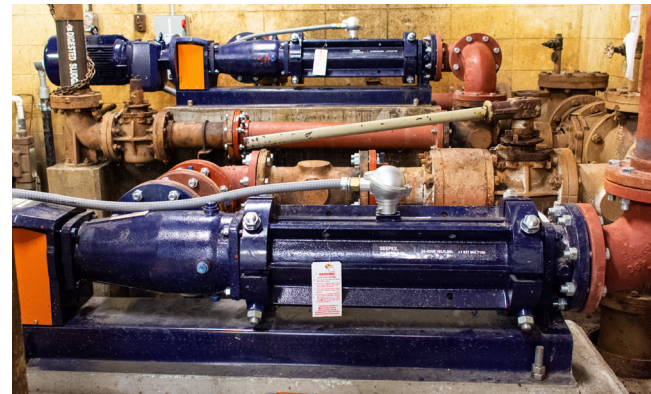


## Before...

The city of Fulton, NY's wastewater treatment plant had been using piston pumps for years for their sludge application. In 2019, the plant upgraded two of the piston pumps to Seepex progressive cavity pumps. The new technology has been working well, and the plant is currently replacing the remaining two piston pumps that were damaged due to a flood with more Seepex BN Range pumps.

## After.

Kevin Fowler at Fulton WWTP described the Seepex pumps as cleaner, quieter, with a more steady flow compared to the old piston pumps. The split stator pumps allow for much easier maintenance as there are no special tools required, removing pipework is not necessary, and workers can adjust for loss of flow.



Seepex Smart Conveying Technology means quick and easy disassembly. The top half of the stator can be removed to gain access for visual inspection of rotor and stator and easy blockage removal. Fulton WWTP also has the Seepex Dry Running Protection Device TSE, which monitors the temperature of the stator and alarms when the set limit is reached.

Contact your local Siewert Equipment Outside  
Sales Engineer to discuss your progressive  
cavity pump application.

Call 800-333-0598 or visit [SiewertEquipment.com](http://SiewertEquipment.com)

