

AMPHIDROME[®] FACILITY REPORT

Plant & Location: Brookside Mill Condominium, Westford, MA

Massachusetts DEP Permit Number: 724-0

Facility type: Housing development.

Chemical Feeds: Carbon & alkalinity

Design: This plant was designed to meet groundwater discharge limits including a total nitrogen limit of ≤ 10 mg/L. Design and average values are provided below.

Parameter	Design Values	Actual Values
Flow	8,000 gpd	3,195 gpd
BOD ₅	250 mg/L	194.8 mg/L
TKN	70 mg/L	37.3 mg/L
C/N	3.6	5.2

C/N - Carbon-to-nitrogen ratio measured as BOD₅/TKN.

Summary: The quality of the effluent from this facility has consistently stayed below permit since it's the start of operation in 2005. The average effluent results for the most recent 24-months of available data (2007 through 2009) are shown in the table below.

	BOD ₅	TSS	Total N
Permit Limit	<i>30 mg/L</i>	<i>30 mg/L</i>	<i>10 mg/L</i>
Average	9.1 mg/L	7.1 mg/L	7.8 mg/L

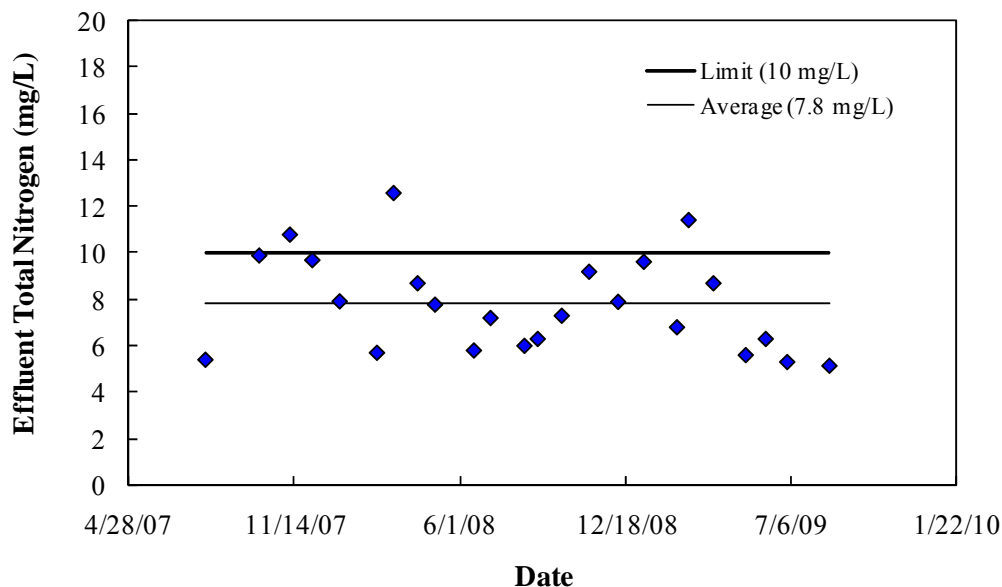


Figure 1. Brookside Mill Condominium Effluent Total Nitrogen